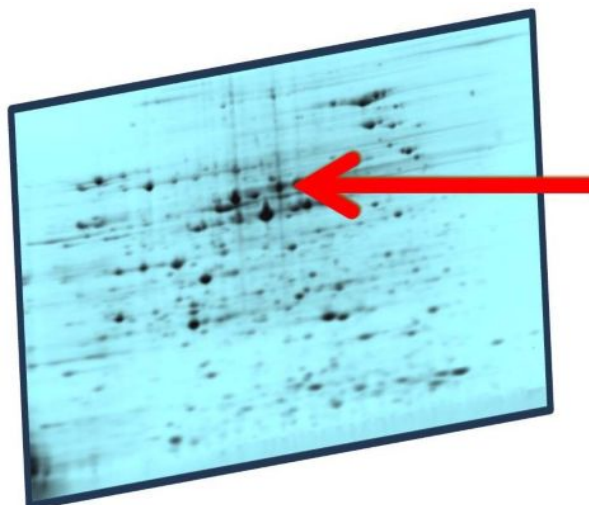


## Client of LIMS for Proteomics:

Data conversion software for the XML files exported from the PDQuest system



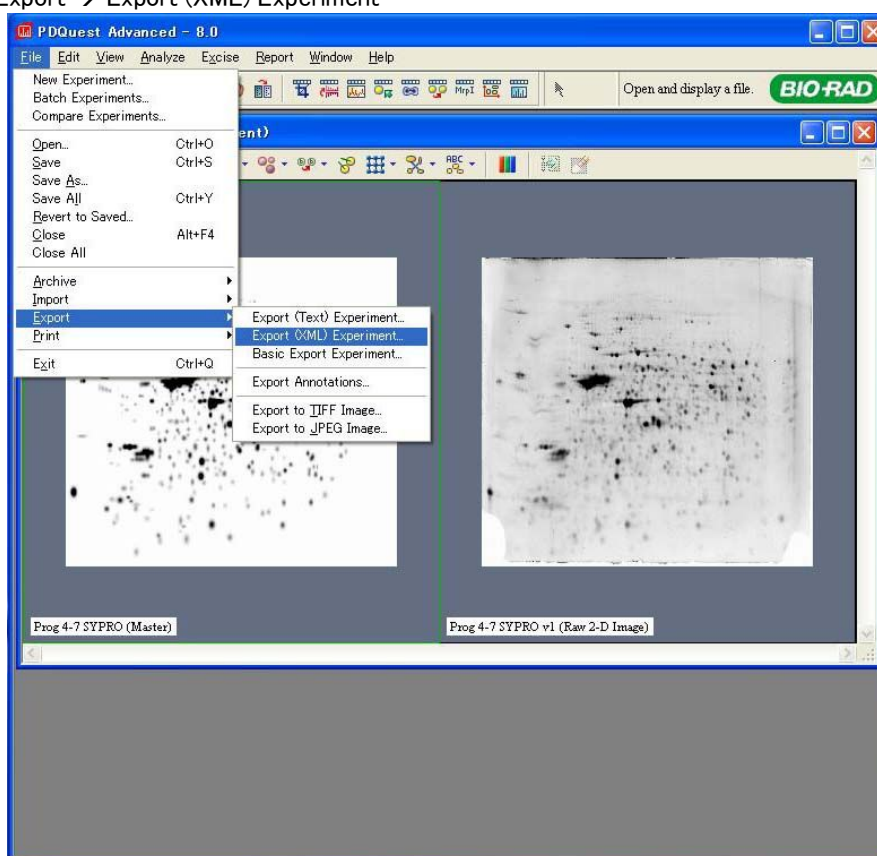
## Manual

Proteomics Collaboration Research Group,  
Tokyo Metropolitan Institute of Gerontology  
35-2 Sakae-cho, Itabashi-ku, Tokyo, 173-0015, Japan  
E-mail : [sangaku@tmig.or.jp](mailto:sangaku@tmig.or.jp)  
Tel: 81-3-3964-3241 ext 3010  
Fax: 81-3-3579-4776

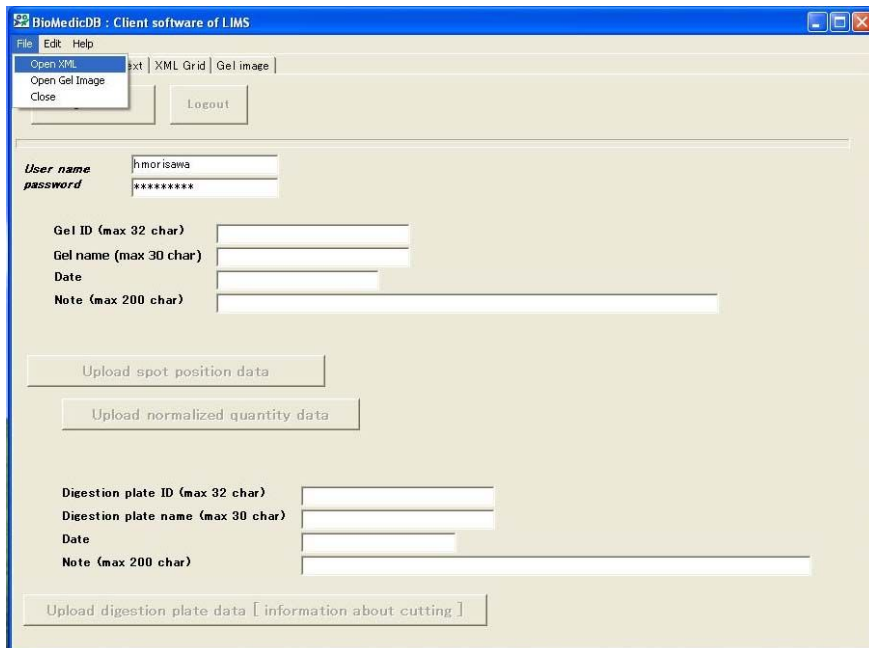
## Data conversion software for the XML files exported from the PDQuest system by Bio-Rad laboratories Inc

### XML Data Upload

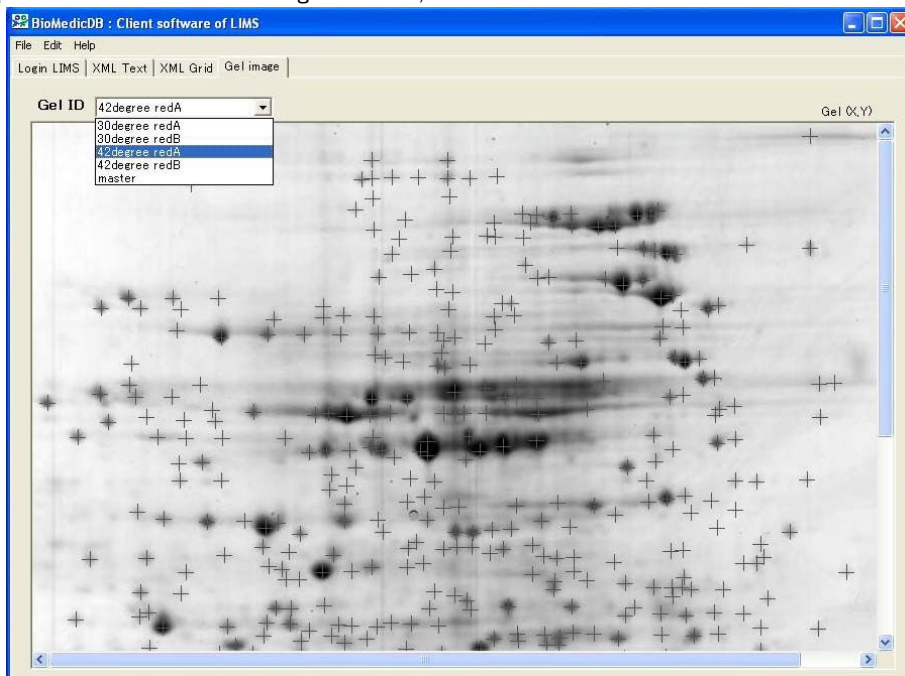
1. Export XML Data from PDQuest
  - 1.1. Start up **PDQuest** Software
  - 1.2. Open Match Set file (**XXX.ms**)
  - 1.3. Export XML Data files as follows:  
File → Export → Export (XML) Experiment



2. Upload XML Data and Gel Image to LIMS
  - 2.1. Start up "**Client of LIMS for Proteomics**"
  - 2.2. Open XML data file as follows:  
File → Open XML



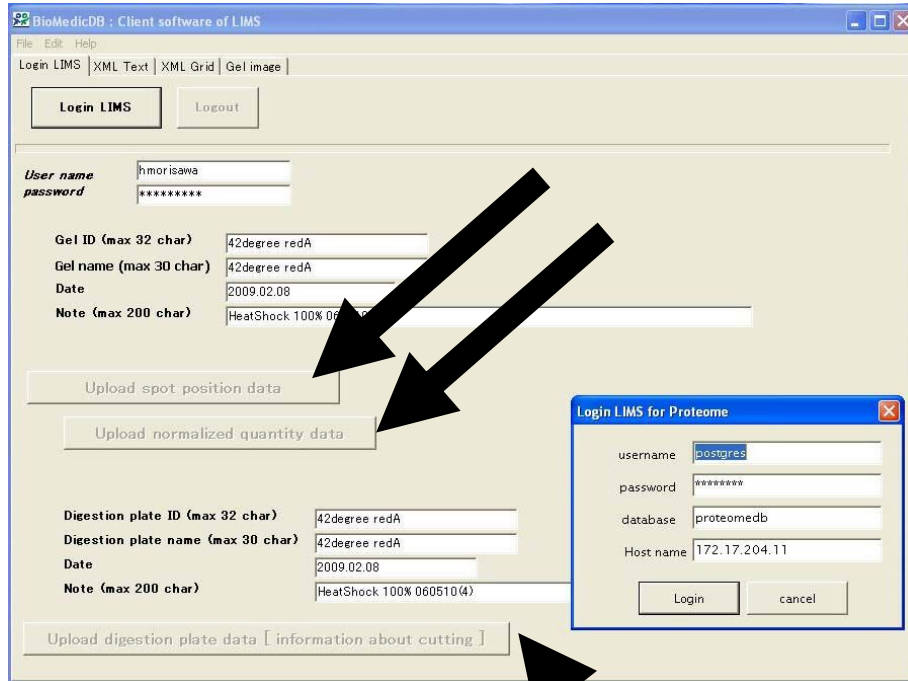
- Select one "XXXX.xml" file
- 2.3. Open Gel Image file as follows:
  - File → Open Gel Image
  - Select one "XXXX.jpg" file
  - In the pull-down menu of "Gel image" window, select one Gel ID



2.4. If you need to change Gel ID and Gel Name, correct the default Gel ID **excluding SPACE**, Gel

name and Date.

2.5. Login LIMS with the default username and password.

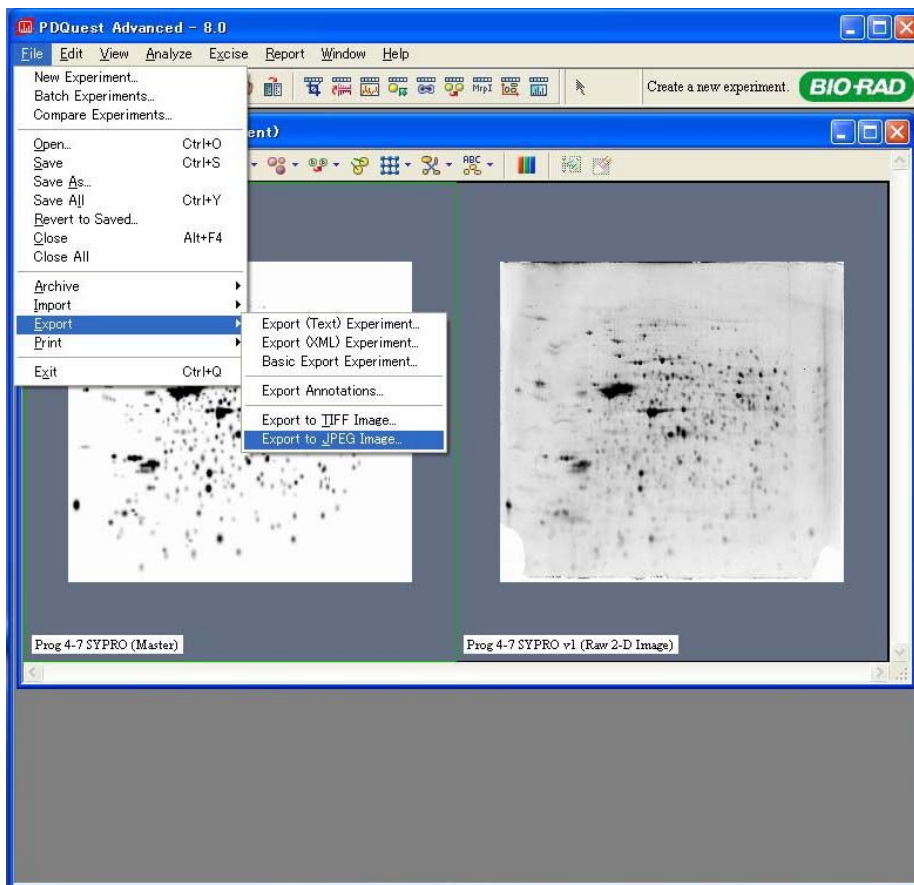


- 2.6. Click "Upload spot position data".  
(Click "OK" in the lipagecliant pop-up windows)
- 2.7. Click "Upload normalized quantity".
- 2.8. Click "Upload Digestion plate data".
- 2.9. Logout

3. Upload Gel Image to LIMS

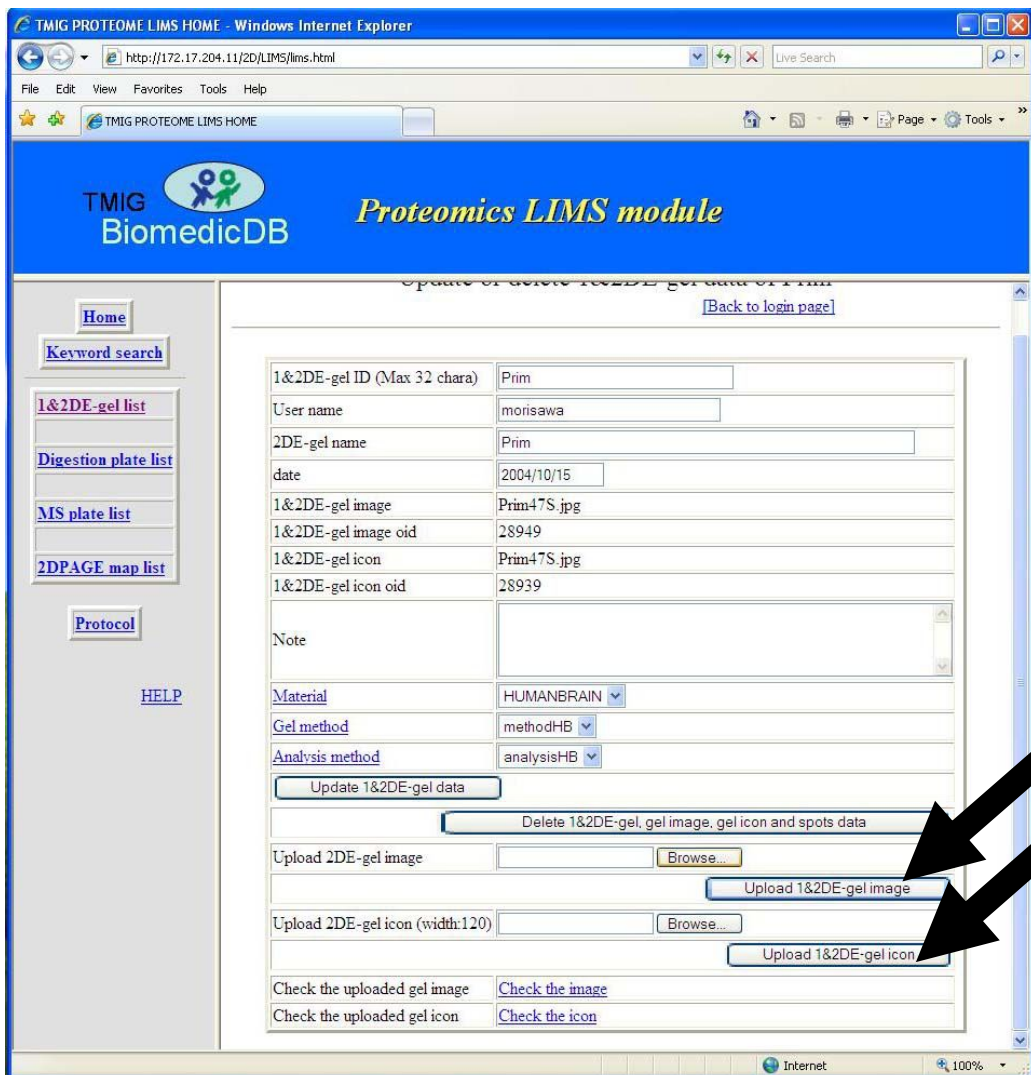
3.1. Exporimage files as follows:

File → Export → Export the JPEG Image.



3.2. Start up a Browser.

3.3. Access to [http://\\*\\*.\\*.\\*\\*\\*/2D/lims/lims.html](http://**.*.***/2D/lims/lims.html).



- 3.4. Log in LIMS
- 3.5. Click "[1&2DE-gel list](#)".
- 3.6. Click the the name of uploaded *1&2DE-gel ID*.
- 3.7. Key in Password for "update 1D & 2D-gel Data".
- 3.8. Select a JPEG image file for Upload 2DE-gel image.
- 3.9. Select a JPEG image file for Upload 2DE-gel icon.