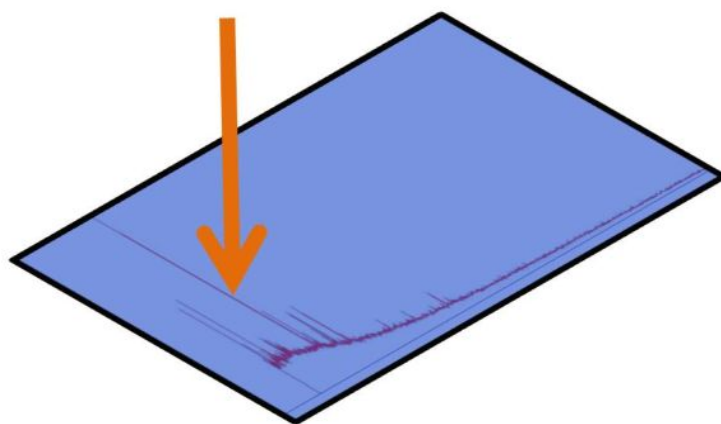


TMIG mzXML Viewer:

Viewer software as an interface for our LIMS to review mass spectra exported in mzXML format.



Manual

Proteomics Collaboration Research Group
Tokyo Metropolitan Institute of Gerontology
35-2 Sakae-cho, Itabashi-ku, Tokyo, 173-0015, Japan
E-mail : sangaku@tmig.or.jp
Tel: 81-3-3964-3241 ext 3010
Fax: 81-3-3579-4776

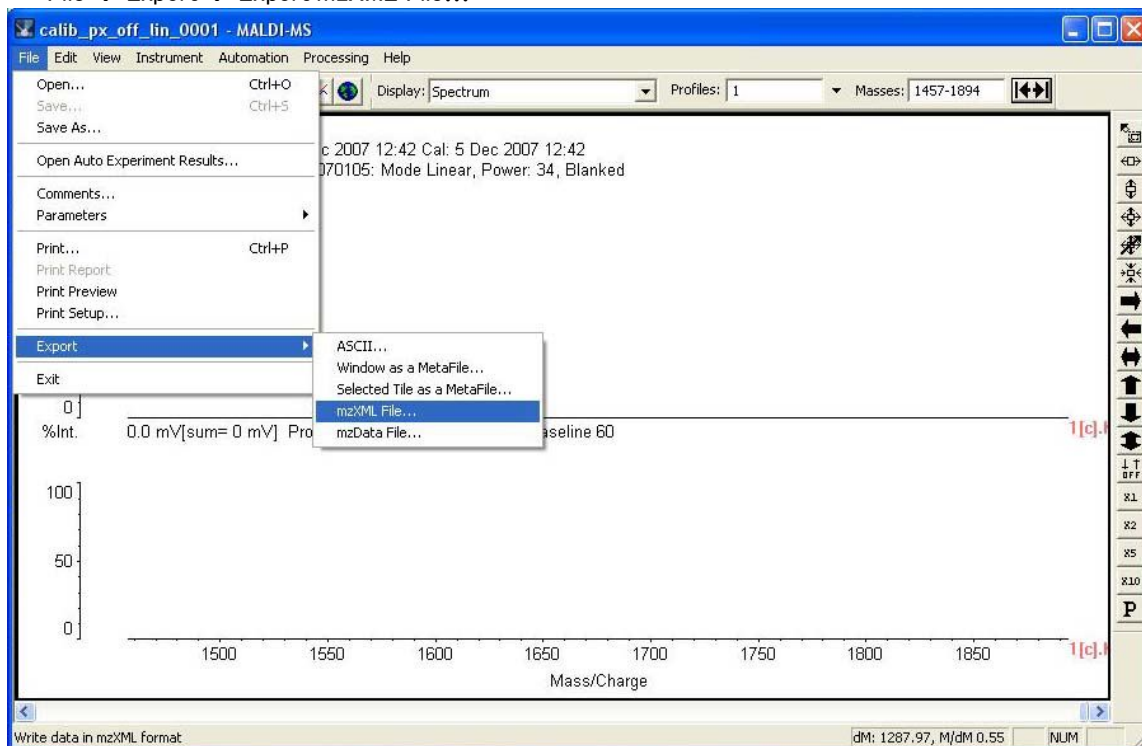
An interface for our LIMS to review mass spectra exported in mzXML format from Launchpad for AXIMA-TOF2 by Shimadzu Corp.

Export XML Data from Launchpad for AXIMA-TOF2

1.1. Start up Launchpad, MALDI-MS application software

1.2. Export XML Data files as follows:

File → Export → Export mzXML File...

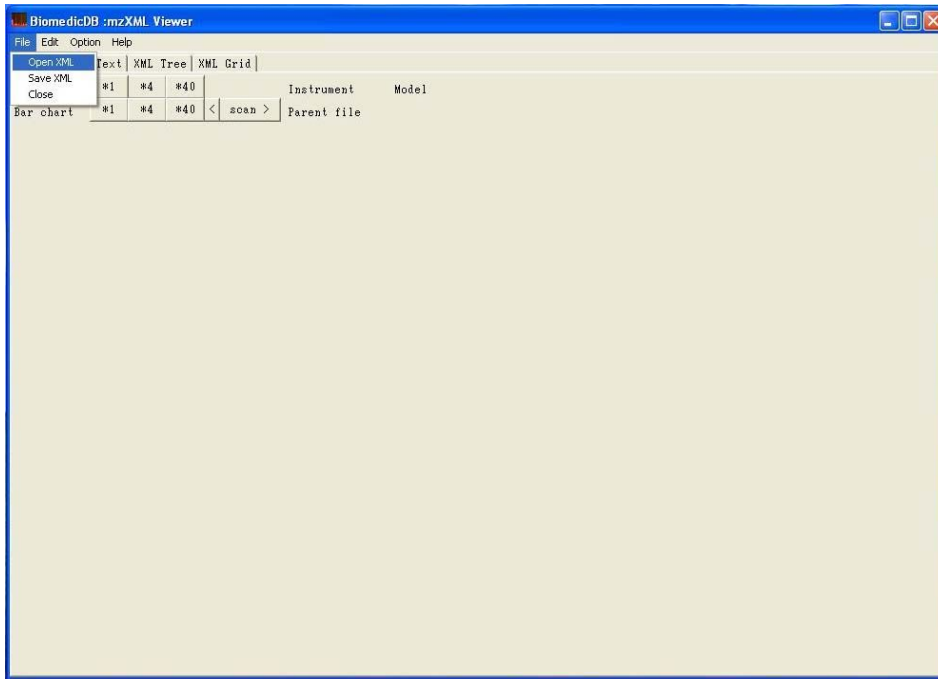


2. Open mzXMLFile

2.1. Start up "TMIG mzXML Viewer"

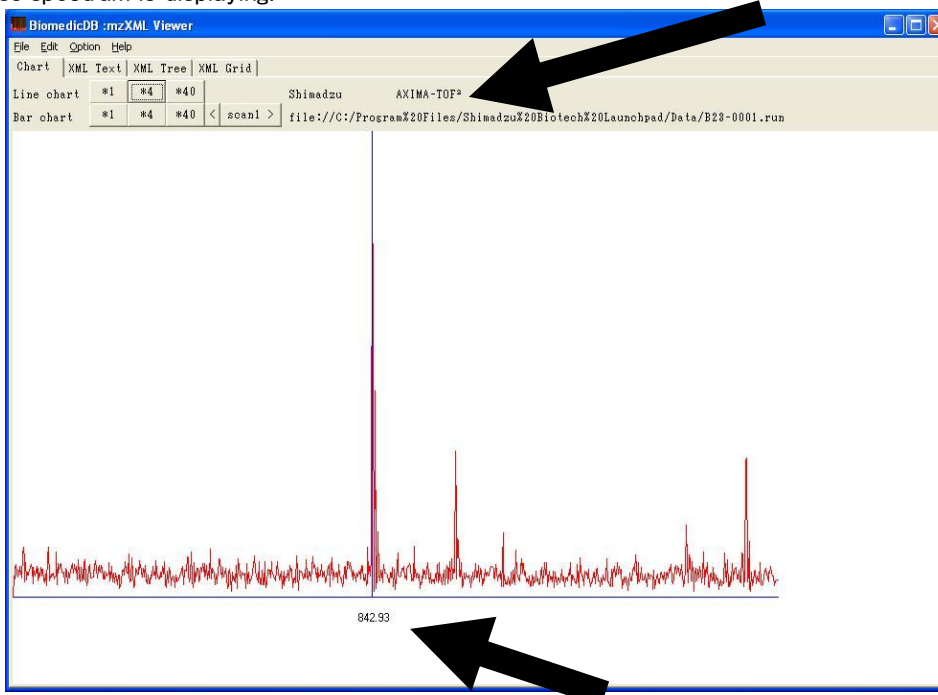
2.2. Open XML data file as follows:

File → Open XML



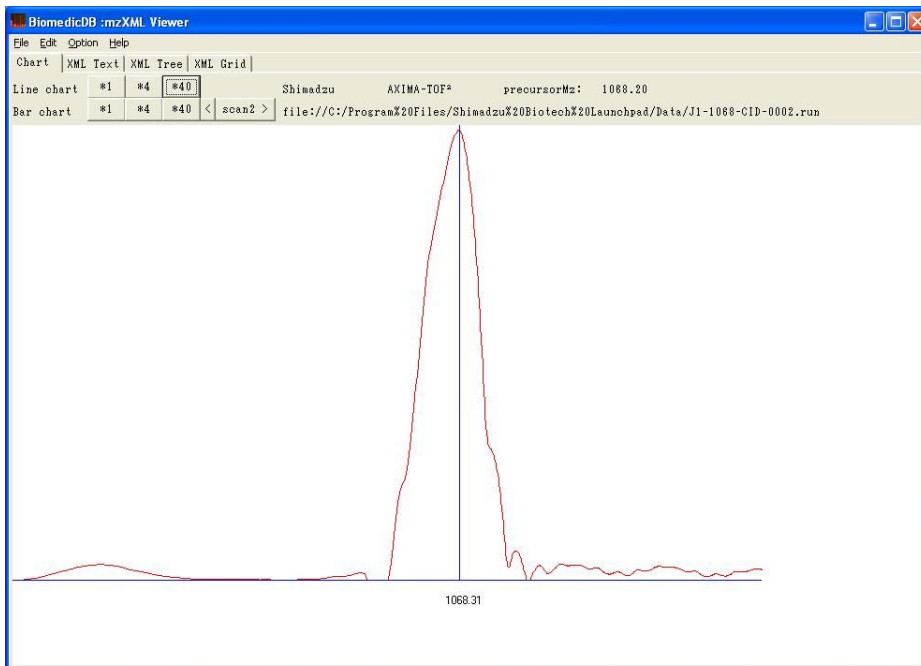
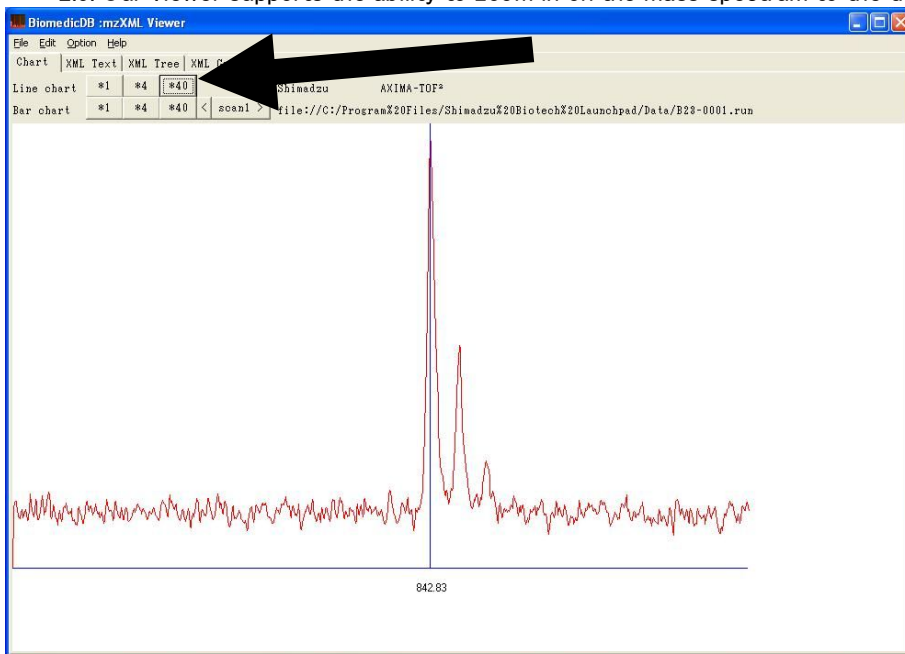
Select one “XXXX.mzXML” file

2.3. The name of manufacture, model and data file are displaying in “Chart” seat. And the chart of mass spectrum is displaying.

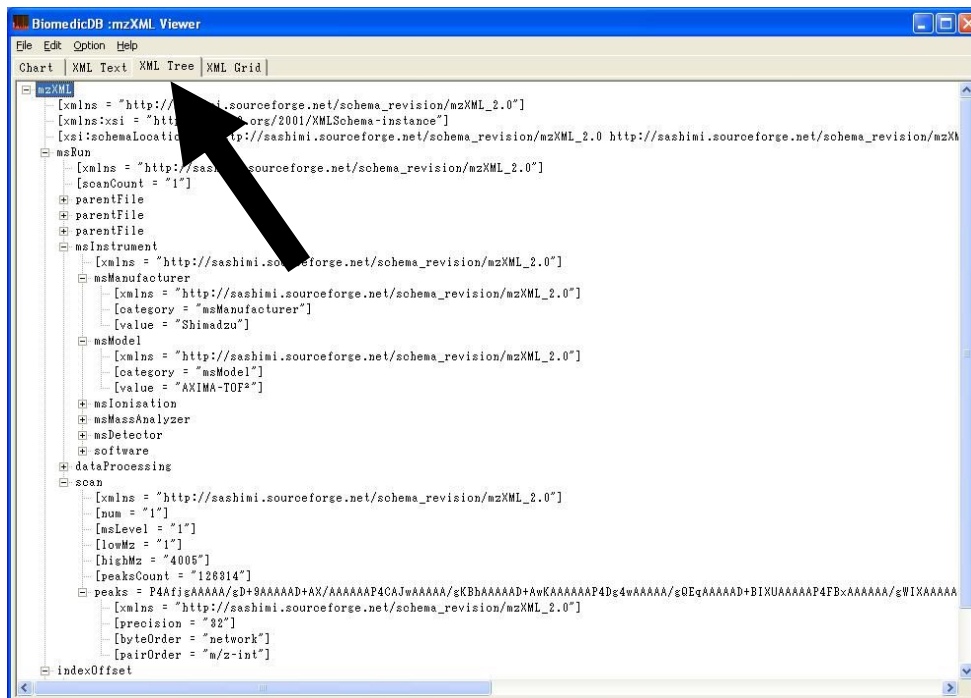


2.4. We can estimate the m/z values corresponding to peaks by clicking the position of peaks.

2.5. Our viewer supports the ability to zoom in on the mass spectrum to the three levels.



3. Check the text of mzXML contents
 - 3.1. Click “XML Text” seat or “XML Tree” seat.



4. Upload MS data file
 - 4.1. Access to http://***.***.***.*/2D/lims/lims.html on web browser.
 - 4.2. Click “MS plate list”.
 - 4.3. Click the name of MS plate ID.
 - 4.4. Enter the Password for “Login for MS plate”.
 - 4.5. Select mzXML file for “Upload MS data file”.

TMIG PROTEOME LIMS HOME - Mozilla Firefox
http://172.17.201.79/2D/LIMS/lms.html

TMIG BiomedicDB Proteomics LIMS module

Update or delete well data of MS plate [\[Back to MS plate map page\]](#)

MS plate ID: NPH-CSF-060920-clop1

Well ID: F20

Well x posi: 440

Well y posi: 773

Well width: 17

Digestion plate ID: NPH-CSF-060920

Well ID (digestion plate): F11

Date: 2006/9/27

Note: toda\toda

(44303)application/octet-stream [Download](#)

0 [Download](#)

1&2DE-gel ID: NPH-CSF-060920

SSP number(1&2DE-gel): 6309

[Detect spot \(2DE-gel\)](#)

Digestion plate ID: NPH-CSF-060920

Well ID (digestion plate): F11

[Detect Well \(digestion plate\)](#)

2DPAGE map ID:

Spot number(2DPAGE map):

[Detect spot of 2DPAGE database](#)

Downloads

openfile.php Done [Open](#) [Remove](#)

All files downloaded to: Desktop [Clean Up](#)

BiomedicDB :mzXML Viewer

File Edit Option Help

[Chart] XML Text XML Tree XML Grid

Line chart *1 *4 *40 Shimadzu AXIMA-TOF⁺

Bar chart *1 *4 *40 < soan1 > file:///C:/Program%20Files/Shimadzu%20Biotech%20Launchpad/Data/B23-001

